



# ACTIVITY GUIDE

14 - 20 DECEMBER 2024

**ALL PRICES ARE PER PERSON!**

SCAN HERE FOR MORE PARK INFO!



## KEY

- 14+** Over 14yrs Ticket
- C** Child Ticket (4 - 13yrs)
- S** Senior Ticket

- F** Family (2A & 2C)
- T** Toddler (2 - 3 yrs)
- X1** Number of turns (per person)

- Specific Opening Times
- Scheduled Session Times
- Age Requirement
- Height Requirement

**SESSION TIMES, RIDE RESTRICTIONS & CONDITIONS OF ENTRY APPLY.**

## ESCAPE ROOMS

**X1 \$39 (1 hour game)**

Sun -Thurs 10am - 7pm  
 Fri & Sat 10am - 9pm

**5+ years**  
**Not included in ULTIMATE PASS.**  
 2 - 6 players per room.

## AXE THROWING

**X1 \$78 for up to 2 people (+\$21 for additional people)** **5+ years (1 hour game)**

Sun -Thurs 10am - 7pm  
 Fri & Sat 10am - 9pm

**Not included in ULTIMATE PASS.**  
 4 people per lane.  
 Must wear enclosed shoes.

## WATER PARK

**14+ \$27** **C over 110cm \$24**  
**F \$89** **C under 110cm \$16**

10am - 11.30am  
 11.45am - 1.15pm  
 1.45pm - 3.15pm

**3-10 years**  
 AquaPlay area

**110-120 cm**  
 Raft Rides with adult

**120 cm**  
 All Slides

## GIANT SLIDE

**X2 \$10** **X4 \$17**

10am - 3.30pm

**85 cm**  
 with adult

**110 cm**  
 alone

## ICE SKATING

**14+ \$26** **C \$24**  
**F \$89** **T \$9**

10.30am - 12pm  
 1.30pm - 3pm  
 3.30pm - 5pm  
 Fri & Sat Night 6pm - 8pm

**Includes skate & helmet hire. BYO socks or purchase at rink.**

## MINI GOLF

**18 Holes** **36 Holes**

**14+ \$17** **14+ \$22**  
**C \$13** **C \$18**  
**F \$56** **F \$73**  
**T FREE** **T FREE**

9am - 5pm

## LASER TAG

**X1 \$13** **X2 \$23**  
**X3 \$32** **X5 \$46**

Sun -Thurs 10am - 6pm  
 Fri & Sat 10am - 9pm

**5+ years**

## TOBOGGAN

**X1 \$10** **X2 \$17**

9am - 5pm

**3-7 years**  
 with adult

**8+ years**  
 alone

**Closes in the rain**

## PLANTATION TOUR

**14+ \$9** **C \$8**  
**F \$27** **T FREE**  
**S \$8**

9am - 4.30pm

## BUMPER CARS

**X1 \$9** **X2 \$15**

10am - 3pm

**90 cm**  
 with adult

**120 cm**  
 alone

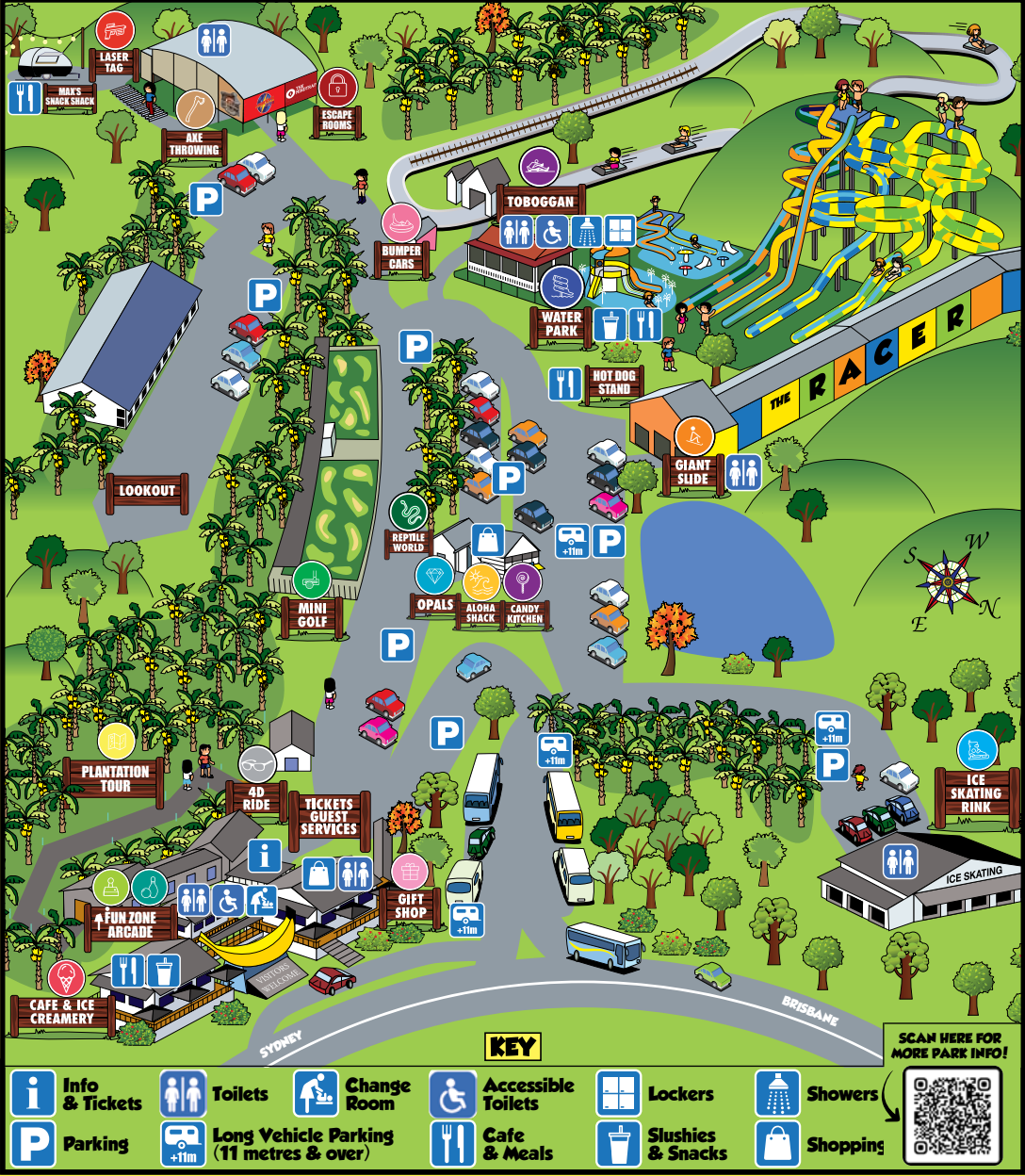
## 4D RIDE

**X1 \$12** **X2 \$19**  
**X3 \$26** **X4 \$29**

9am - 5pm

**90 cm**  
 with adult - separate seat

**100 cm**  
 alone - separate seat



## DON'T MISS THESE OTHER FUN ACTIVITIES AT THE PARK!

 <p><b>FUN ZONE</b></p>	<p>The biggest arcade in town! Go straight to the Fun Zone, no ticket needed.</p>	 <p><b>REPTILE WORLD</b></p> <p>Meet Snappy the Croc! Plus other snakes and reptiles. <b>SEPERATE ENTRY FEE APPLIES</b></p>
 <p><b>DUCKPIN BOWLING</b></p>	<p>A mini version of 10-pin bowling! No ticket needed, simply grab a Fun Zone Card.</p>	 <p><b>THE OPAL CENTRE</b></p> <p>Displaying an exquisite range of opal gemstones, quality jewellery and unique souvenirs.</p>
 <p><b>COFFS CANDY KITCHEN</b></p>	<p>Candy making demonstrations run daily from 10am - 2pm. Free Entry!</p>	 <p><b>ALOHA SHACK</b></p> <p>Take a piece of the Pacific Islands home with you with locally designed &amp; sustainable products</p>