



# ACTIVITY GUIDE

27 JAN - 2 FEB 2025

**ALL PRICES ARE PER PERSON!**

SCAN HERE FOR MORE PARK INFO!



## KEY

- 14+** Over 14yrs Ticket
- C** Child Ticket (4 - 13yrs)
- S** Senior Ticket

- F** Family (2A & 2C)
- T** Toddler (2 - 3yrs)
- x1** Number of turns (per person)

- Specific Opening Times
- Scheduled Session Times
- Age Requirement
- Height Requirement

**SESSION TIMES, RIDE RESTRICTIONS & CONDITIONS OF ENTRY APPLY.**

## ESCAPE ROOMS

**x1 \$39 (1 hour game)**

Sun -Thurs 10am - 8pm  
 Fri & Sat 10am - 9pm

5+ years  
**Not included in ULTIMATE PASS.**  
 2 - 6 players per room.

## AXE THROWING

**x1 \$78 for up to 2 people (+\$21 for additional people)** 5+ years (1 hour game)

Sun -Thurs 10am - 8pm  
 Fri & Sat 10am - 9pm

**Not included in ULTIMATE PASS.**  
 4 people per lane.  
 Must wear enclosed shoes.

## WATER PARK

**14+ \$27** **C over 110cm \$24**  
**F \$89** **C under 110cm \$16**

10am - 11.30am  
 11.45am - 1.15pm  
 1.45pm - 3.15pm

3-10 years AquaPlay area  
 110-120 cm Raft Rides with adult  
 120 cm All Slides

## GIANT SLIDE

**x2 \$10** **x4 \$17**

10am - 3.30pm

85 cm with adult  
 110 cm alone

## ICE SKATING

**14+ \$26** **C \$24**  
**F \$89** **T \$9**

10.30am - 12pm  
 1.30pm - 3pm  
 3.30pm - 5pm  
 Fri & Sat Night 6pm - 8pm

**!** Includes skate & helmet hire. BYO socks or purchase at rink.

## MINI GOLF

18 Holes 36 Holes

<b>14+ \$17</b>	<b>14+ \$22</b>
<b>C \$13</b>	<b>C \$18</b>
<b>F \$56</b>	<b>F \$73</b>
<b>T FREE</b>	<b>T FREE</b>

9am - 5pm

## LASER TAG

**x1 \$13** **x2 \$23**  
**x3 \$32** **x5 \$46**

Sun -Thurs 10am - 8pm  
 Fri & Sat 10am - 9pm

5+ years

## TOBOGGAN

**x1 \$10** **x2 \$17**

10am - 4pm

3-7 years with adult  
 8+ years alone  
**!** Closes in the rain

## PLANTATION TOUR

**14+ \$9** **C \$8**  
**F \$27** **T FREE**  
**S \$8**

9am - 4.30pm

## BUMPER CARS

**x1 \$9** **x2 \$15**

10am - 3pm

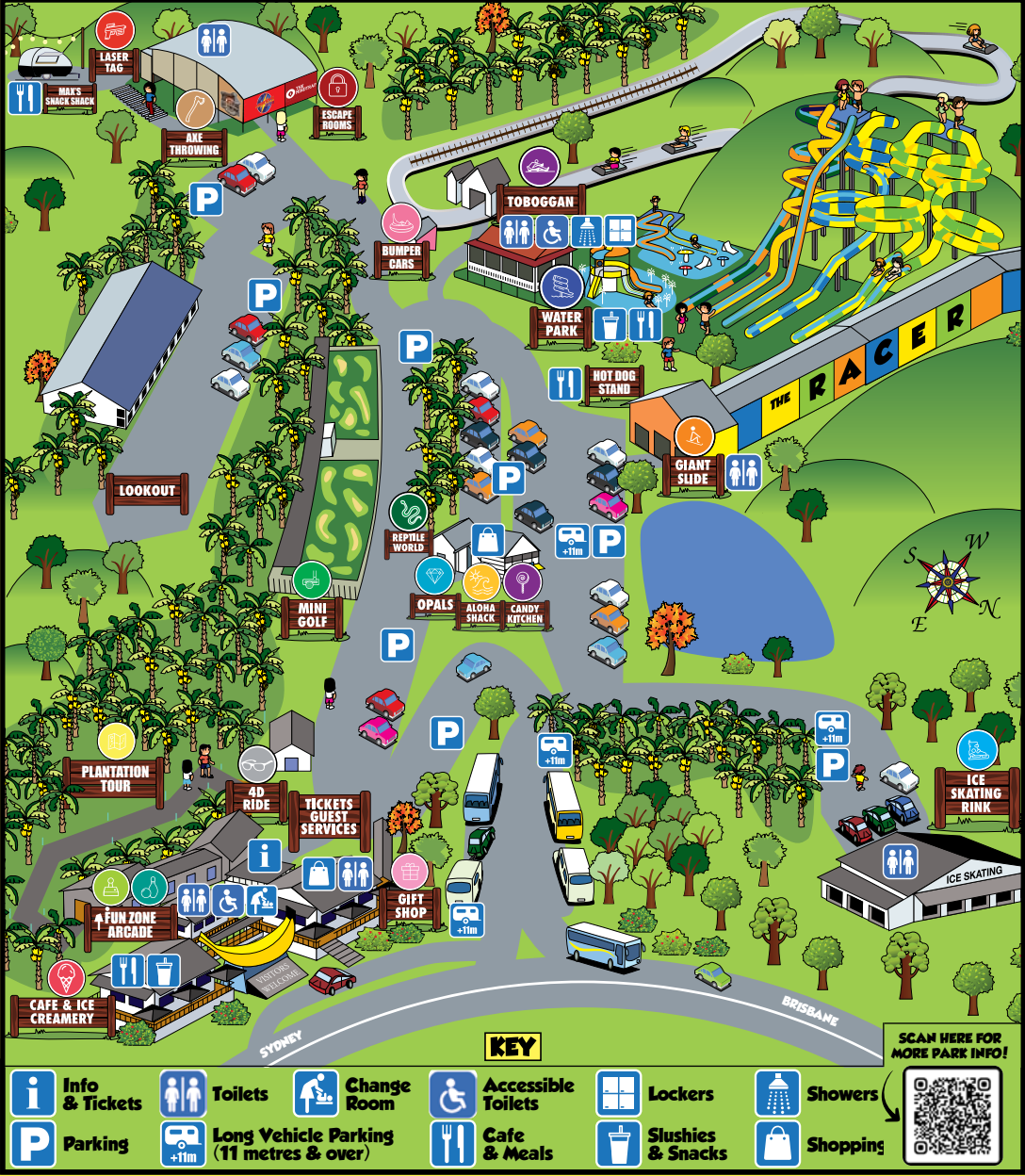
90 cm with adult  
 120 cm alone

## 4D RIDE

**x1 \$12** **x2 \$19**  
**x3 \$26** **x4 \$29**

9am - 5pm

90 cm with adult - separate seat  
 100 cm alone - separate seat



	<b>Info &amp; Tickets</b>		<b>Toilets</b>		<b>Change Room</b>		<b>Accessible Toilets</b>		<b>Lockers</b>		<b>Showers</b>
	<b>Parking</b>		<b>Long Vehicle Parking (11 metres &amp; over)</b>		<b>Cafe &amp; Meals</b>		<b>Slushies &amp; Snacks</b>		<b>Shopping</b>		

## DON'T MISS THESE OTHER FUN ACTIVITIES AT THE PARK!

	<b>FUN ZONE</b>	The biggest arcade in town! Go straight to the Fun Zone, no ticket needed.		<b>REPTILE WORLD</b>	Meet Snappy the Croc! Plus other snakes and reptiles. SEPERATE ENTRY FEE APPLIES.
	<b>DUCKPIN BOWLING</b>	A mini version of 10-pin bowling! No ticket needed, simply grab a Fun Zone Card.		<b>THE OPAL CENTRE</b>	Displaying an exquisite range of opal gemstones, quality jewellery and unique souvenirs.
	<b>COFFS CANDY KITCHEN</b>	Candy making demonstrations run daily from 10am - 2pm. Free Entry!		<b>ALOHA SHACK</b>	Take a piece of the Pacific Islands home with you with locally designed & sustainable products.